

**HEAD OFFICE**

303 Church Street  
 Private Bag X 44  
 MOGWADI 0715  
 Telephone : (015) 5012300  
 Fax no : (015) 501 0419  
 E-mail: info@molemole.gov.za

**Molemole Municipality**

ALL CORRESPONDENCE TO BE ADDRESSED TO THE MUNICIPAL MANAGER

**MOREBENG BRANCH OFFICE**

25 Cnr. Roets & Vivierers Street  
 MOREBENG 0810  
 Telephone : (015) 501 2371  
 Fax no : (015) 397 4334

[www.molemole.gov.za](http://www.molemole.gov.za)**Enquiries: Ralephenya T.D****Reference: COR: 8/1/1/09****06 September 2019****REQUEST FOR QUOTATION FROM SERVICE PROVIDERS REGISTERED ON THE CENTRAL SUPPLIER DATABASE FOR THE SUPPLY AND DELIVERY OF OFFICE FURNITURE.****1. BID SPECIFICATION [please quote using the following layout]**

DESCRIPTION	COLOUR	QTY	LOCATION AND QUANTITY	DELIVERY ADDRESS
<b>President Veneer:</b> Bowfront Desk 2100 X 950	VC Cherry Oak	02	Senior Manager: LED	Mogwadi - Old Building
Inlay LHS		04	Branch Manager, Senior LED, Management Rep	Morebeng, Morebeng DTLC
Hinged Door Credenza 1250X650 - Shelf				
<b>President Veneer:</b> Wall Unit – Glass Doors 900 X 360 X 1900H	VC Cherry Mahogany	03 03 03	CFO Branch Manager Administration Officer (MM's Office)	Mogwadi Civic Centre Morebeng
Veneer reception desk with Glass Top	Mahogany	01	Administration Officer (MM's Office)	Mogwadi Civic Centre
Veneer 6 Drawer Desk 1800 X 900	VC Cherry Oak	02 02	Budget Manager	Mogwadi Civic Centre
90 Degree Link 900 X 450 LHS		02	Branch Secretary Office	Morebeng
Hinged Door Credenza 1250 X 650 - Shelf				
VENEER 6 DRAWER DESK 1800 X 900	VC Cherry Oak	01	Admin Assistant	Morebeng
Extension Desk 900 X 450	VC Cherry Oak	01	Communication Officer	Mogwadi Civic Centre
Mounted Executive chair with swivel and mechanism capacity of up 120Kg	Black	03		
Dbollo High Back executive chair WITH SWIVEL AND TILT MECHANISM WITH	Black	01	Mayor's Office	Mogwadi Civic Centre

**Vision: A developmental people driven organization that serves its people"****Mission: To provide essential and sustainable services in an efficient and effective manner.**

CAPACITY OF UP TO 120KG (height adjustable)				
SAVER HIGH BACK CHAIRS - NYLON BASE BLACK EPOXY ARM WITH SWIVEL AND TILT MECHANISM WITH CAPACITY OF UP TO 120KG (height adjustable)	Black	05	Morebeng DLTC	Morebeng
STEEL STATIONERY CUPBOARD 1800H X 900W X 450D – SHELVES WITH LOCKABLE DOORS	Ivory	02	Mogwadi Old Building Morebeng	Mogwadi Old Building Morebeng
SILVERLINE 5 SEATER WAITING AREA CHAIRS	SILVER	03	Morebeng DLTC	Morebeng DLTC
50 INCH LED COLOUR TV		02	MM's / Mayors waiting area	Mogwadi Civic Centre
SUPPLY and installation USB DVD PLAYER to TV		01	MM's / Mayors waiting area	Mogwadi Civic Centre
Supply and Installation 12000 BTU split Air conditioner		05	Morebeng / Income Manager	Morebeng Mogwadi Civic Centre
Supply and Installation 18000 BTU Split Air Conditioner		01	Morebeng Boardroom	Morebeng

**The following documentation should accompany your quotations:**

- a) The recent up-to-date central supplier data (CSD) registration report detailing all compliance requirements; [Last verified between the advert date and the closing date]
- b) Include in the quotation, the Master Registration Number or Tax compliance status pin [or recent printed copy of tax clearance certificate]
- c) A certified copy of valid BBBEE certificate (Original also accepted)
- d) Fully signed and completed declaration of interest form [downloadable from [www.molemole.gov.za](http://www.molemole.gov.za)]
- e) Fully signed and completed MBD 9 form [downloadable from [www.molemole.gov.za](http://www.molemole.gov.za)]

***N.B. Failure to attach the above documents will disqualify the bidder from further evaluation.***

---

**Vision: A developmental people driven organization that serves its people"**

**Mission: To provide essential and sustainable services in an efficient and effective manner.**

**The following conditions will apply:**

- Quotation must be on an official letterhead of the company;
- Price(s) quoted must be valid for at least thirty (30) days from the date of this offer;
- Price (s) must be firm and inclusive of VAT;
- Payment will be effected within 30 days of receipt of invoice.
- The Municipality is not bound to accept the lowest or any bid and reserves the right to not accept any quotation either wholly or a part thereof.

Kindly direct all technical enquiries to **Ms Khoza K** at **015 501 2300** between **08:00 and 16:30**. All quotations should be submitted at Mogwadi Municipal RFQ Tender Box by the latest **12 September 2019 at 11:00**, clearly marked No**"SUPPLY AND DELIVERY OF OFFIE FURNITURE"**. No quotation will be accepted after the closing date and Time.



**MOSEANA ML**  
**Municipal Manager**

---

**Vision: A developmental people driven organization that serves its people"**

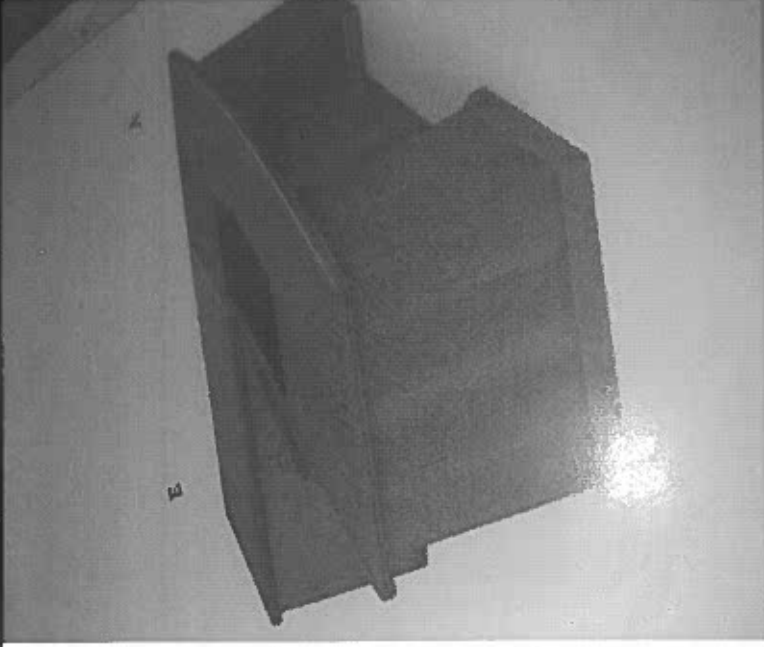
**Mission: To provide essential and sustainable services in an efficient and effective manner.**

**TYPE OF OFFICE FURNITURE AND WOOD REQUIRED**

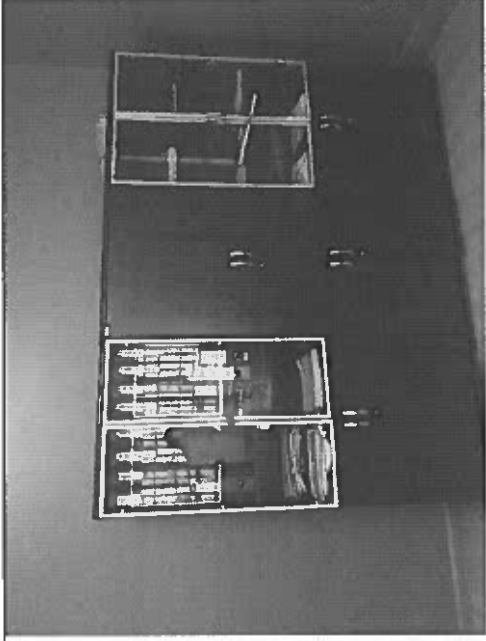
**DESCRIPTION**

Bowfront Desk 2100 X 950 Inlay LHS  
Hinged Door Credenza 1250X650 - Shelf

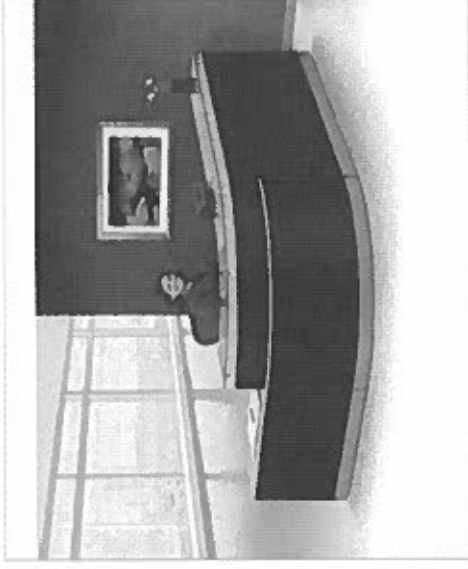
**SAMPLE PIC**



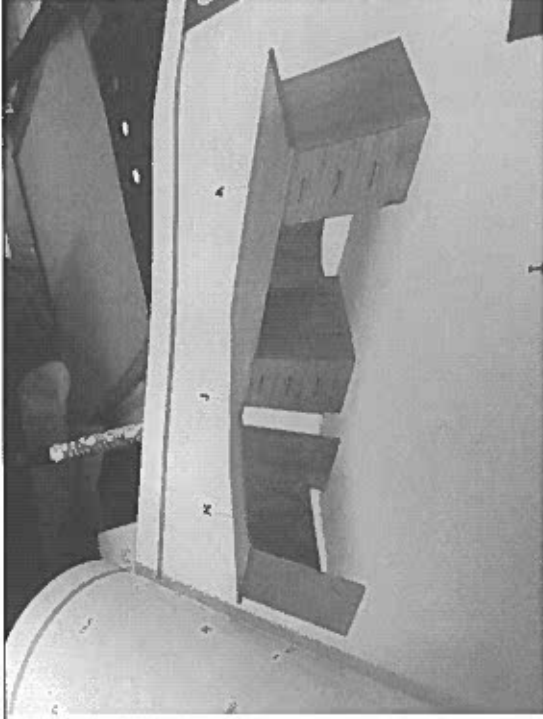
**President Veneer:**  
Wall Unit – Glass Doors 900 X 360 X 1900H



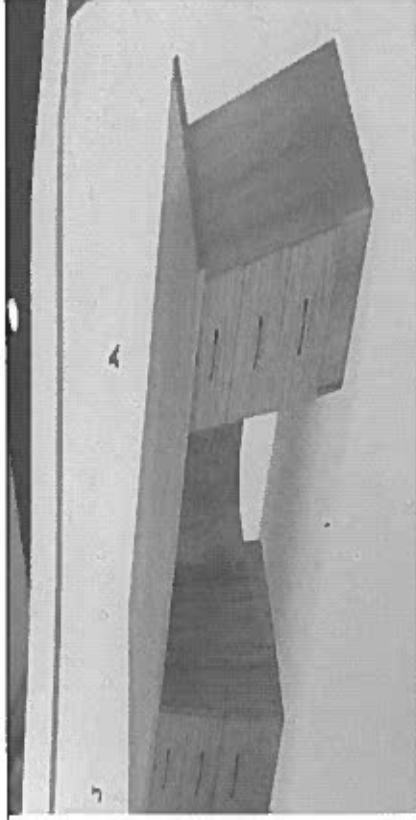
**Reception Desk with Glass top**



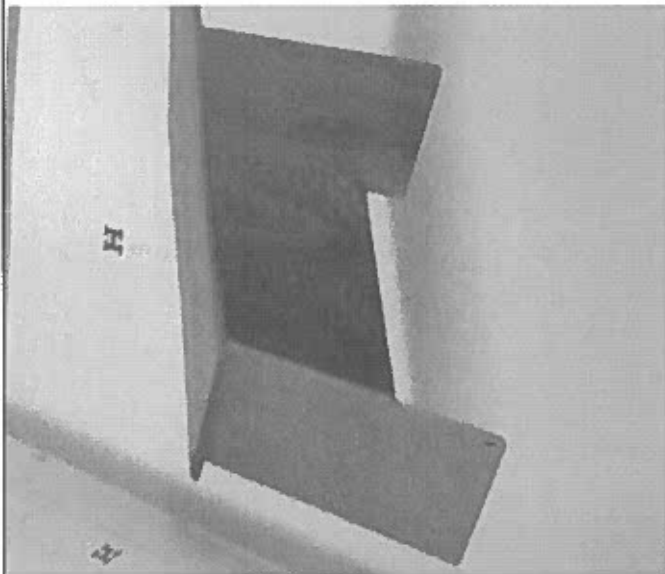
Veneer 6 Drawer Desk 1800 X 900  
90 Degree Link 900 X 450 LHS  
L-Extension 900 X 450



VENEER 6 DRAWER DESK 1800 X 900



Extension Desk 900 X 450

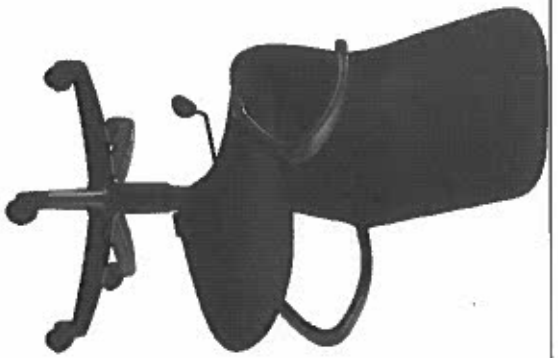


**Dbollo High Back executive chair WITH SWIVEL AND TILT MECHANISM WITH CAPACITY OF UP TO 120KG (height adjustable)**

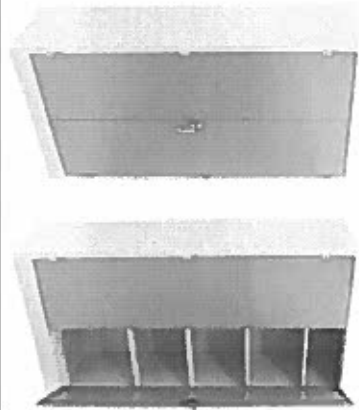




**SAVER HIGH BACK CHAIRS - NYLON BASE BLACK EPOXY  
ARM WITH SWIVEL AND TILT MECHANISM WITH CAPACITY  
OF UP TO 120KG (height adjustable)**



**STEEL STATIONERY CUPBOARD 1800H X 900W X 450D -  
SHELVES WITH LOCKABLE DOORS**



SILVERLINE 5 SEATER WAITING AREA CHAIRS

